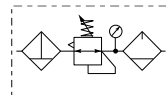
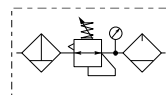


Popular Combinations : Inlet pressure 10 bar, Secondary pressure 6.3 bar, 1 bar pressure drop.



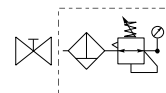
Filter + Regulator + Lubricator Combinations + Poly bowl
5 micron element, 8 bar Regulator + Gauge and Wall Mounting Brackets

Port size	Flow dm ³ /s	Flow (scfm)	Manual Drain	Weight	Pulse Drain	Weight
1/4"	13	27	P31CB12GEMNTLNW	0.46 kg (1.01 lbs)	P31CB12GEBNTLNW	0.46 kg (1.01 lbs)



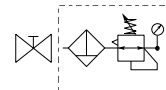
Filter/Regulator + Lubricator Combinations + Poly bowl
5 micron element, 8 bar Regulator + Gauge and Wall Mounting Brackets

Port size	Flow dm ³ /s	Flow (scfm)	Manual Drain	Weight	Pulse Drain	Weight
1/4"	14	28	P31CA12GEMNTLNW	0.35 kg (0.77 lbs)	P31CA12GEBNTLNW	0.35 kg (0.77 lbs)



Slide Valve + Filter/Regulator + Lubricator Combinations + Poly bowl
5 micron element, 8 bar Regulator + Gauge and Wall Mounting Brackets

Port size	Flow dm ³ /s	Flow (scfm)	Manual Drain	Weight	Pulse Drain	Weight
1/4"	14	28	P31YA12GEMNTLNW	0.54 kg (1.19 lbs)	P31YA12GEBNTLNW	0.54 kg (1.19 lbs)



Slide Valve + Filter/Regulator Combinations + Poly bowl
5 micron element, 8 bar Regulator + Gauge and Wall Mounting Brackets

Port size	Flow dm ³ /s	Flow (scfm)	Manual Drain	Weight	Pulse Drain	Weight
1/4"	14	28	P31YN12GEMNTW	0.4 kg (0.88 lbs)	P31YN12GEBNTW	0.4 kg (0.88 lbs)

P 3 1

E

N

LN

W

Combination

Combination

C

Shut off + Combi ¹

Y

Thread type

BSPP

1

NPT

9

Port size

1/4

2

Drain type

Manual drain

M

Pulse drain

B

Adjustment range

With square gauge

2 bar *

V

4 bar

S

8 bar **

T

Add only for options with Lubricator

Combination type

F/R+L

A

F+R+L

B

F/R

N

Bowl type

Poly bowl with bowl guard

G

Metal bowl without sight glass

M

Note:

All bowl types are the same for each component

Example:

If a "G" is specified for a F+L, both units would get a poly bowl with bowl guard.

* Unit comes with 0-4 bar, gauge respectively

** Unit comes with 0-10 bar, gauge respectively

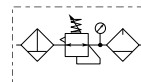
¹ Option not available with F+R+L

* Unit comes with 0-4 bar, gauge respectively

** Unit comes with 0-10 bar, gauge respectively

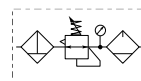
¹ Option not available with F+R+L

Popular Combinations : Inlet pressure 10 bar, Secondary pressure 6.3 bar, 1 bar pressure drop.



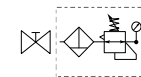
Filter + Regulator + Lubricator Combinations + Poly bowl
5 micron element, 8 bar Regulator + Gauge and Wall Mounting Brackets

Port size	Flow dm ³ /s (scfm)		Manual Drain	Weight	Auto Drain	Weight
1/4"	20	42	P32CB12GEMNGLNW	1.29 kg (2.84 lbs)	P32CB12GEANGLNW	1.29 kg (2.84 lbs)
3/8"	32	68	P32CB13GEMNGLNW	1.29 kg (2.84 lbs)	P32CB13GEANGLNW	1.29 kg (2.84 lbs)
1/2"	40	85	P32CB14GEMNGLNW	1.29 kg (2.84 lbs)	P32CB14GEANGLNW	1.29 kg (2.84 lbs)



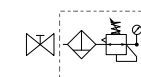
Filter/Regulator + Lubricator Combinations + Poly bowl
5 micron element, 8 bar Regulator + Gauge and Wall Mounting Brackets

Port size	Flow dm ³ /s (scfm)		Manual Drain	Weight	Auto Drain	Weight
1/4"	22	45	P32CA12GEMNGLNW	1.03 kg (2.27 lbs)	P32CA12GEANGLNW	1.03 kg (2.27 lbs)
3/8"	33	70	P32CA13GEMNGLNW	1.03 kg (2.27 lbs)	P32CA13GEANGLNW	1.03 kg (2.27 lbs)
1/2"	43	90	P32CA14GEMNGLNW	1.03 kg (2.27 lbs)	P32CA14GEANGLNW	1.03 kg (2.27 lbs)



Slide Valve + Filter/Regulator + Lubricator Combinations + Poly bowl
5 micron element, 8 bar Regulator + Gauge and Wall Mounting Brackets

Port size	Flow dm ³ /s (scfm)		Manual Drain	Weight	Auto Drain	Weight
1/4"	22	45	P32YA12GEMNGLNW	1.5 kg (3.3 lbs)	P32YA12GEANGLNW	1.5 kg (3.3 lbs)
3/8"	33	70	P32YA13GEMNGLNW	1.5 kg (3.3 lbs)	P32YA13GEANGLNW	1.5 kg (3.3 lbs)
1/2"	43	90	P32YA14GEMNGLNW	1.5 kg (3.3 lbs)	P32YA14GEANGLNW	1.5 kg (3.3 lbs)

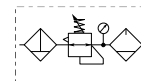


Slide Valve + Filter/Regulator Combinations + Poly bowl
5 micron element, 8 bar Regulator + Gauge and Wall Mounting Brackets

Port size	Flow dm ³ /s (scfm)		Manual Drain	Weight	Auto Drain	Weight
1/4"	22	45	P32YN12GEMNGW	1.1 kg (2.42 lbs)	P32YN12GEANGW	1.1 kg (2.42 lbs)
3/8"	33	70	P32YN13GEMNGW	1.1 kg (2.42 lbs)	P32YN13GEANGW	1.1 kg (2.42 lbs)
1/2"	43	90	P32YN14GEMNGW	1.1 kg (2.42 lbs)	P32YN14GEANGW	1.1 kg (2.42 lbs)

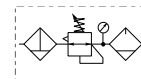
P 3 2					E		N		L N	W
Combination Combination C Shut off + Combination ¹ Y		Thread type BSPP 1 NPT 9		Port size 1/4 2 3/8 3 1/2 4		Drain type Auto drain A Manual drain M		Adjustment range With round gauge 0-2 bar; 0-30 psi; 0.2 MPa Z 4 bar; 60 psi; 0.4 MPa M 8 bar; 125 psi; 0.8 MPa G		Add only for options with Lubricator
¹ Option not available with F+R+L		Combination type F/R+L A F+R+L B F/R N		Bowl type Poly bowl with bowl guard G Metal bowl with sight glass S		Note: All bowl types are the same for each component Example: If a "G" is specified for a F+L, both units would get a poly bowl with bowl guard.				

Popular Combinations : Inlet pressure 10 bar, Secondary pressure 6.3 bar, 1 bar pressure drop.



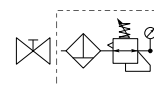
Filter + Regulator + Lubricator Combinations + Poly bowl
5 micron element, 8 bar Regulator + Gauge and Wall Mounting Brackets

Port size	Flow dm ³ /s	Flow (scfm)	Manual Drain	Weight	Auto Drain	Weight
1/2"	43	90	P33CB14GEMNGLNW	1.84 kg (4.06 lbs)	P33CB14GEANGLNW	1.84 kg (4.06 lbs)
3/4"	52	110	P33CB16GEMNGLNW	1.84 kg (4.06 lbs)	P33CB16GEANGLNW	1.84 kg (4.06 lbs)



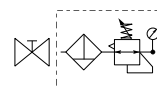
Filter/Regulator + Lubricator Combinations + Poly bowl
5 micron element, 8 bar Regulator + Gauge and Wall Mounting Brackets

Port size	Flow dm ³ /s	Flow (scfm)	Manual Drain	Weight	Auto Drain	Weight
1/2"	52	110	P33CA14GEMNGLNW	1.51 kg (3.33 lbs)	P33CA14GEANGLNW	1.51 kg (3.33 lbs)
3/4"	71	150	P33CA16GEMNGLNW	1.51 kg (3.33 lbs)	P33CA16GEANGLNW	1.51 kg (3.33 lbs)



Slide Valve + Filter/Regulator + Lubricator Combinations + Poly bowl
5 micron element, 8 bar Regulator + Gauge and Wall Mounting Brackets

Port size	Flow dm ³ /s	Flow (scfm)	Manual Drain	Weight	Auto Drain	Weight
1/2"	52	110	P33YA14GEMNGLNW	2.35 kg (5.2 lbs)	P33YA14GEANGLNW	2.35 kg (5.2 lbs)
3/4"	71	150	P33YA16GEMNGLNW	2.35 kg (5.2 lbs)	P33YA16GEANGLNW	2.35 kg (5.2 lbs)



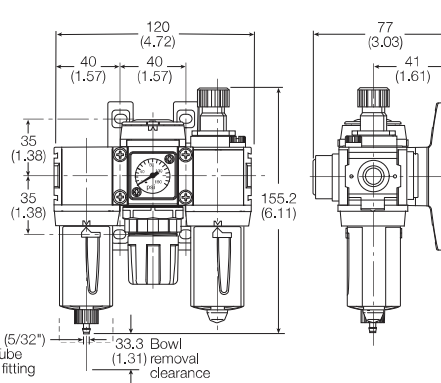
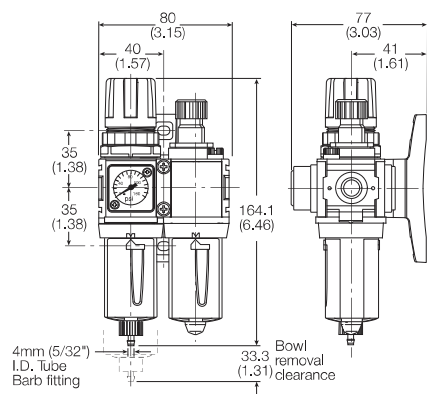
Slide Valve + Filter/Regulator Combinations + Poly bowl
5 micron element, 8 bar Regulator + Gauge and Wall Mounting Brackets

Port size	Flow dm ³ /s	Flow (scfm)	Manual Drain	Weight	Auto Drain	Weight
1/2"	52	110	P33YN14GEMNGW	1.7 kg (3.75 lbs)	P33YN14GEANGW	1.7 kg (3.75 lbs)
3/4"	71	150	P33YN16GEMNGW	1.7 kg (3.75 lbs)	P33YN16GEANGW	1.7 kg (3.75 lbs)

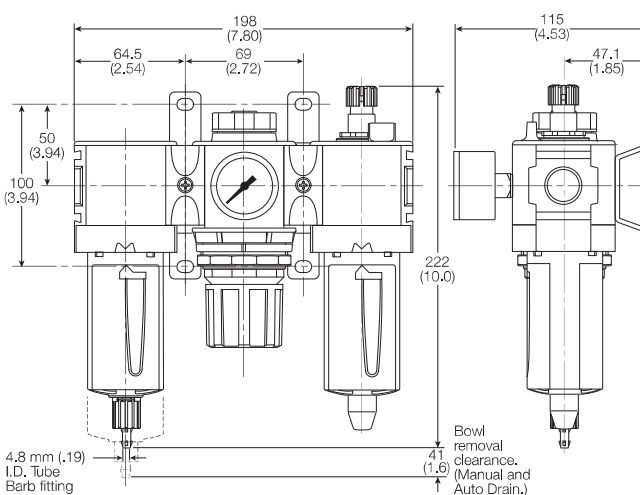
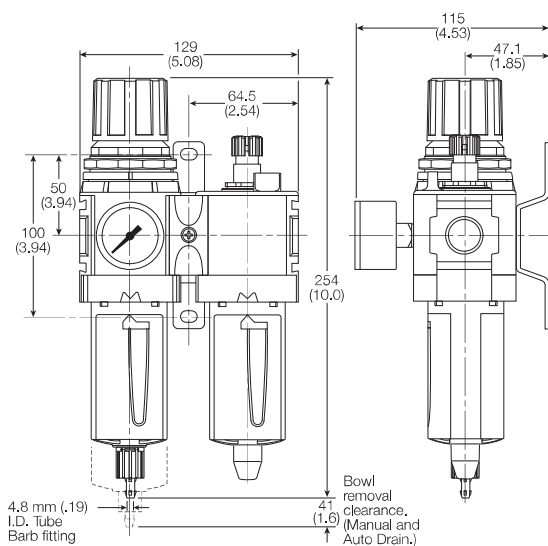
P 3 3						E		N		L N	W
Combination Combination C Shut off + Combination ¹ Y		Thread type BSPP 1 NPT 9		Port size 1/2 4 3/4 6		Drain type Auto drain A Manual drain M		Adjustment range With round gauge 0-2 bar; 0-30 psi; 0.2 MPa Z 4 bar; 60 psi; 0.4 MPa M 8 bar; 125 psi; 0.8 MPa G		Add only for options with Lubricator	
¹ Option not available with F+R+L		Combination type F/R+L A F+R+L B F/R N		Bowl type Poly bowl with bowl guard G Metal bowl with sight glass S		Note: All bowl types are the same for each component Example: If a "G" is specified for a F+L, both units would get a poly bowl with bowl guard.					

Popular Combination Dimensions - mm (inches)

P31



P32



P33

